

# Imagine Environmental Science Academy

## Serving Grades K-3

1030 Clay Ave  
Toledo, OH 43608  
Phone 419-442-0223

[www.ImagineESA.org](http://www.ImagineESA.org)



### SCHOOL LEADER

Ashley M. Vandermeer

### SCHOOL BOARD

Atayna Hayes, President  
C'Shalla Parker, Vice President  
Kasey Giebel, Treasurer  
Stephen Vary, Secretary  
Terry Farris, PhD

*In partnership with families and the community, ensuring that all students can learn and apply the academic and social skills to be successful, positive contributing members of society. To empower students with the knowledge to be change agents and stewards of their environment.*

## Curriculum

Imagine Environmental Science Academy employs research based programs including, but not limited to, Heggerty, West Virginia phonics, Writing Revolution, Literacy Footprints, and Daily Guided Math. The school also utilizes regionally developed Imagine Pacing Guides and Curriculum Guides for all core subjects in all grade levels.

## Additional Offerings & Highlights

During the 22-23 school year went to Country Lane Tree Farm for the 2nd year in a row. We also continued our partnership with Toledo Grows and Imagination Station.

Imagine Environmental Science Academy held quarterly award ceremonies highlighting our students' and families' achievements and participation. We hosted our first Black History assembly for families and had a successful family night opportunity, our "Sneaker Ball".



### Recognized for Promising Practices in Character Education by Character.org

"We're Going Places"

This was our theme for the year and we utilized the idea of passports with different destination goals for our students. These goals aligned with the goals in our School Excellence Plan.

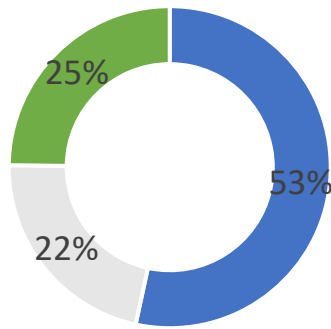
# Demographics

81.7%  
Attendance Rate

44  
Total Enrollment

100%  
Economic Disadvantage

## STUDENTS



■ Black ■ Not Calculated ■ Multiracial

## TEACHERS

General Education 2  
Special Education 1  
Paraprofessionals 5

168.5  
Instructional Days



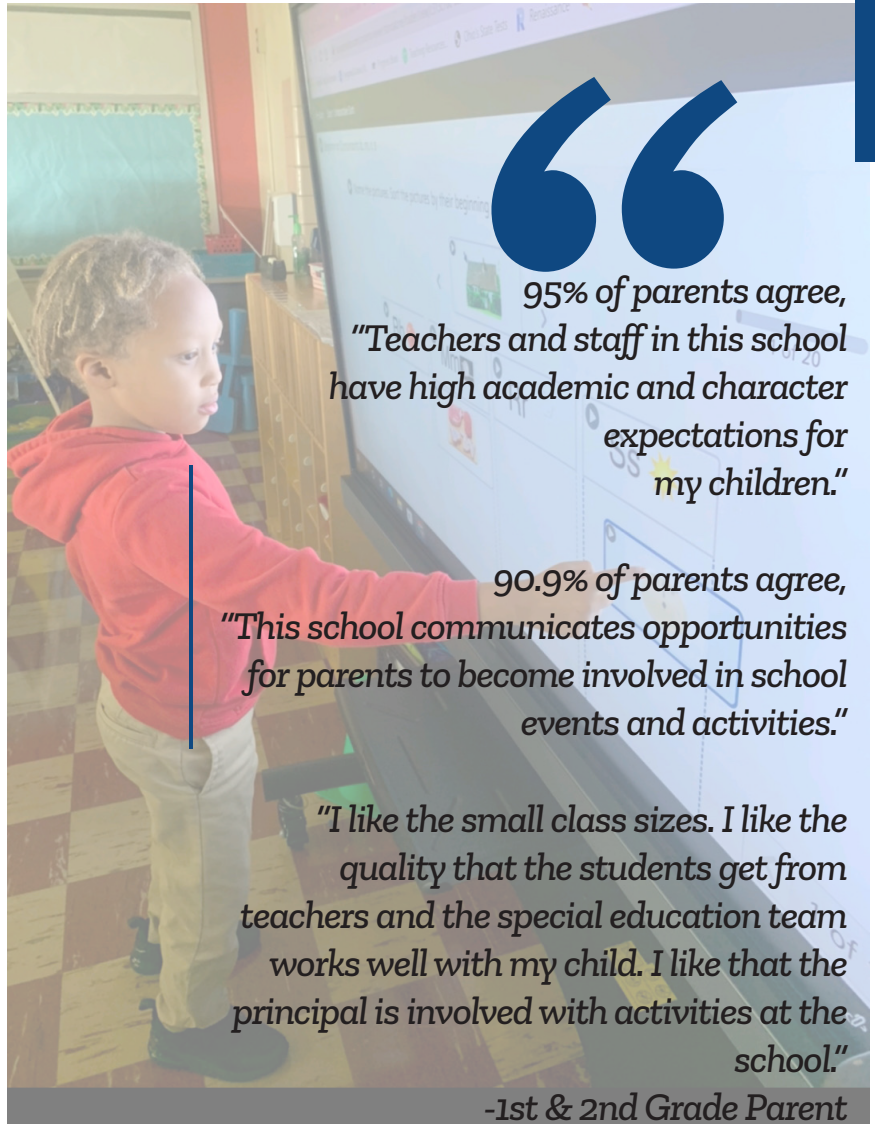
## Funding

Total Operating Revenues  
\$624,932

Non-Operating Revenues  
\$427,033

Operating Expenses  
\$1,051,965

Cash basis, unaudited. Provided by Imagine Environmental Science Academy's Designated Fiscal Officer.



“95% of parents agree, “Teachers and staff in this school have high academic and character expectations for my children.”

90.9% of parents agree, “This school communicates opportunities for parents to become involved in school events and activities.”

“I like the small class sizes. I like the quality that the students get from teachers and the special education team works well with my child. I like that the principal is involved with activities at the school.”

-1st & 2nd Grade Parent

# Academic Goals & Results

Imagine Environmental Science Academy aims for every student to gain more than one year’s growth during the academic year and achieve a Student Growth Percentile of 40 or greater. We also strive for all students who enter below grade level to attain grade level proficiency within three years or less. Those at or above grade level will be challenged to soar beyond expectations.

The Renaissance STAR assessment system is used worldwide as a multipurpose tool for screening and progress monitoring, and includes resources for targeting instruction for individual learners. Test indicators measure student learning gains, or academic growth over the course of one school year. Student Growth Percentile, or SGP, is also collected to compare a student’s growth to that of his or her academic peers nationwide. SGP is reported on a 1–99 scale, with lower numbers indicating lower relative growth and higher numbers indicating higher relative growth. For example, if a student has an SGP of 90, it means the student has shown more growth than 90 percent of academic peers.

## STAR Renaissance 2022-2023

Grade	Early Literacy Mean Learning Gain	Reading Mean Learning Gain	Math Mean Learning Gain	Early Literacy SGP	Reading SGP	Math SGP
K	1.23			56	65	75
1	1.03	1.13	1.29	42	36	80
2	1.03	1.11	1.14	17	36	57
3	1.00	1.04	1.07	42	31	58
Overall	1.10	1.10	1.19	43	36	68

## Ohio School Report Card 2022-2023

Gap Closing	Early Literacy	Overall Rating
<p>Needs significant support to meet state standards in closing educational gaps.</p>	<p>Needs significant support to meet state standards in early literacy (K-3).</p>	<p>Needs significant support to meet state standards</p>
<p>The Gap Closing Component is a measure of the reduction in educational gaps for student subgroups.</p>	<p>The Early Literacy Component is a measure of reading improvement and proficiency for students in kindergarten through third grade.</p>	<p>Districts and schools receive an overall rating of 1 to 5 stars in half-star increments.</p>

## Sponsor Statement

Buckeye Community Hope Foundation (BCHF) relies on multiple sources of data to evaluate the community school’s performance including academic performance on national normed tests and academic scores published by the Department of Education & Workforce on the Local Report Card. In addition, BCHF conducts multiple onsite visits to the school throughout the year to ensure compliance with all Rule and Law, as well as, the sponsorship contract. Performance results for the school will be available for the 2022-2023 school year on the BCHF website [www.bchf.org](http://www.bchf.org) after November 30.